

How to fix beds and baths for Pets

As [TSR RigFix](#) will not fix your beds and baths, you'll need to manually correct these files. Luckily we have a great plugin for TSR Workshop to be able to quickly fix this.

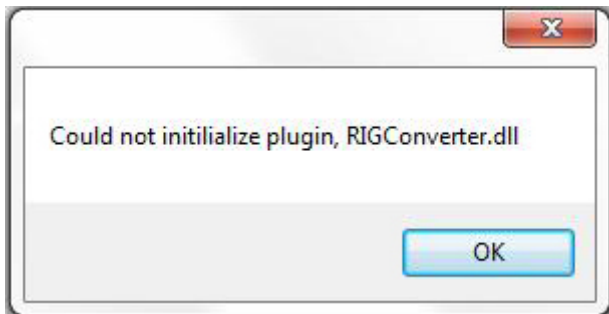
1. Installing RIG Converter

Please put the RIGConverter.dll (needs valid link) in the following folder:

C:\Program Files (x86)\The Sims Resource\TSR Workshop\plugins

2. Open Project

Open TSRW, if you do not have the granny2.dll in your main TSRW folder you will get the following error when loading TSRW. Don't worry the plugin will still work, just click **OK**.

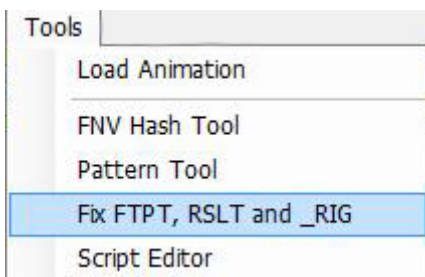


You can now open your old project for the bed or the bath you want to fix.

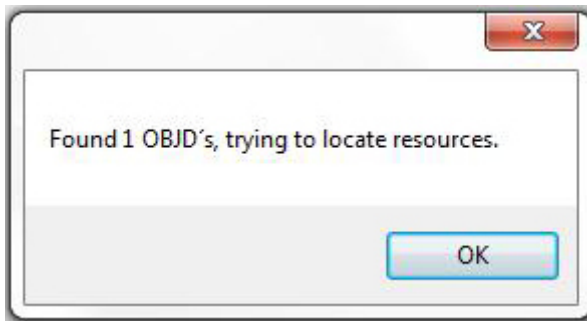


3. Fix FTPT, RSLT and _RIG

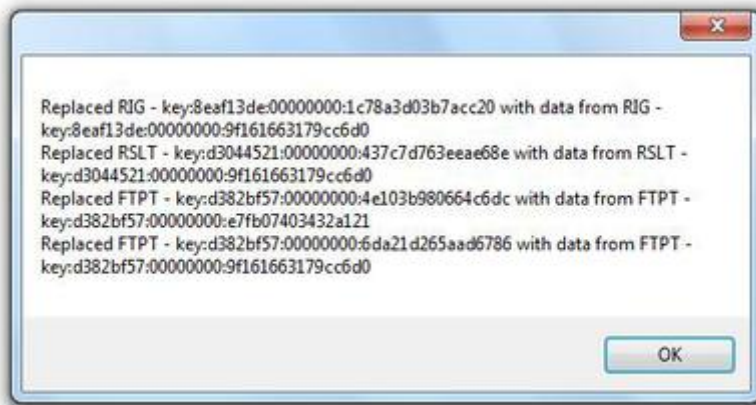
With your project open, go to the menu **Tools** and choose **Fix FTPT, RSLT and _RIG**.



A new popup window will tell you TSRW has located the OBJD like so. Click **OK**



Another popup will show you the files have been replaced. Here we also click **OK**.



4. Save and Export

You are done now. Export the new Sims3Pack and save your .wrk file.

5. TSR RigFix

For safety reasons run your new Sims3Pack through [TSR RigFix](#).

Please make sure to uninstall any previous version of your bed and/or tub before installing the new one.